



**Chelsea
Senior Center**

**Our mission is to enhance the
quality of life and well-being for
area seniors and their families.**



Gardening in the hoop house. Last year volunteers spent 720 hours in the Intergenerational Garden.

2020 Annual Report



Meals on Wheels – This vital program never stopped thanks to volunteers and staff and continues to provide over 500 meals per week – that's over 28,000 meals and more than 5,000 volunteer hours just since COVID hit.



Wellness Calls – Our staff and volunteers made hundreds of telephone calls to area seniors in the past year to check in and address needs.



Transportation – Through our Vital Seniors grant, we continue to fund the ROAM bus for WAVE to operate on our behalf. This provides free or low-cost transportation for area seniors.

Remote Activities – Though inside, on-site programs paused for the most part, we were able to offer many programs remotely and outdoors to keep seniors engaged.

Volunteers – They are key to what we do. Without them, we would not have the impact we do or reach the number of area seniors that we do. Volunteers are the backbone of what we do.



Virtual Happy Hour with CSC friends.

Here to Help – Our office team was on-site throughout COVID to take calls from those seeking assistance covering a wide range of needs including: home repairs, tax assistance, transportation, COVID information, grocery and pharmacy delivery options, and many more.

"I am so glad the Senior Center has been able to offer so many fun and meaningful programs. The ROAM bus service is being used regularly by myself and is a great blessing. It allows me to visit my friend who lives at Silver Maples and to get back and forth to appointments. They are always on time and the drivers are friendly and helpful. One great advantage also is that I can schedule a whole month of rides at a time." –Sonja Wackenhut



Outdoor exercise

2020 Donors*

Benefactors

Anonymous
 Joan Alford
 Charlotte Bentley
 John Daniels
 Jodi Daniels
 Lois DeLeon
 Jean Dunn
 Steve & Kathy Eberle
 Tim & Judy Flint
 John Frank
 Lou Ellyn Green & Jim Heaton
 Will Johnson
 Gladys Kennedy
 Susan Lackey
 Bill Lewis
 Dave & Martha Luick
 Joan Maier
 Gary & Jo Ann Munce
 John Murphy
 Jim & Mary Randolph
 David & Deborah Schaible
 Jean Vargas

Patrons

Bill & Tootie Ackley Jim & Janet Alford Phil & Lynne Boham Darla Bohlender Don & Linda Cole Edward Comeau Nancy Cooper Dennis & Julie Deppner Fred & Sally Dickinson Jayetta Edwards Bill & Shar Eisenbeiser Charles & Mary Jo Freitas Ken & D'Ann Gietzen Monica & Rick Gofton Mary Green Cheryl & Scott Johnson (Sue) Hosoon & (John) Chongmin Kim Doris Lindsay	Minnie Maier Dr. Gary & Mary Maynard Dennis McDonald Maryann Myers Frank & Sharon Pignanelli Max & Sherri Plank Pauline Porath Michelle Rankin Ed & Karin Riske Christine & Eric Sing Mary Tomac Ed & Veretta Whitaker Nancy Whitelaw Joanne Wilkie Jerry & Chris Wilczynski Shaw Family Foundation Steve & Dayle Wright Charlotte Wyche
--	---

Memorial Donations in Honor of

Shar Eisenbeiser Ann Feeney Bob Ford Ann Huxol	Donna Lane Dave Redic Patricia Shoemaker Jo Summers
---	--

*We are fortunate to have an amazing support system of donors. Those recognized here contributed at least \$200 in 2020.



Brown Bag Lunches



Al's 100th Birthday Celebration



CAADY Corner Quilters



Line Dancing



Ukulele Group



Student volunteers help area seniors rake leaves as part of our C2S2 program.

2020 Sponsors & Community Partners

Platinum Sponsor

Edward Jones: Michael O'Quinn and Diane L. Kieliszewski

Gold Sponsors

Chelsea Lumber
Chelsea State Bank
Jiffy Mixes
Silver Maples of Chelsea
St. Joseph Mercy Chelsea Hospital
WellBridge of Pinckney

Silver Sponsors

IHA Chelsea Primary Care
Cole Funeral Chapel
TCF Bank
Staffan Mitchell Funeral Home
United Methodist Retirement Communities

Bronze Sponsors

Rankin Audiology & Hearing
Farm Bureau Insurance - Rick Eder
John McDermott
Legacy Assisted Living Center
State Farm Insurance - Bill Ballagh
StoryPoint

Friends of CSC

Susan V. Brown, PLC
Care Patrol of Southern MI
Comfort Keepers
Green Age Cleaners
Lehman & Scheffler Real Estate Services

Community Partners

Chelsea VFW Post 4076
Kiwanis Club of Chelsea
Chelsea Lions
Ann Arbor Area Community Foundation
Chelsea United Way
City of Chelsea
Dexter Township
Lima Township
Lyndon Township
Chelsea District Library
Chelsea School District
Community Foundation of SE Michigan



Volunteer appreciation evening (January 2020) with local entertainers Gemini.

CSC office team steps up to cover meals on wheels.



2020 Staff

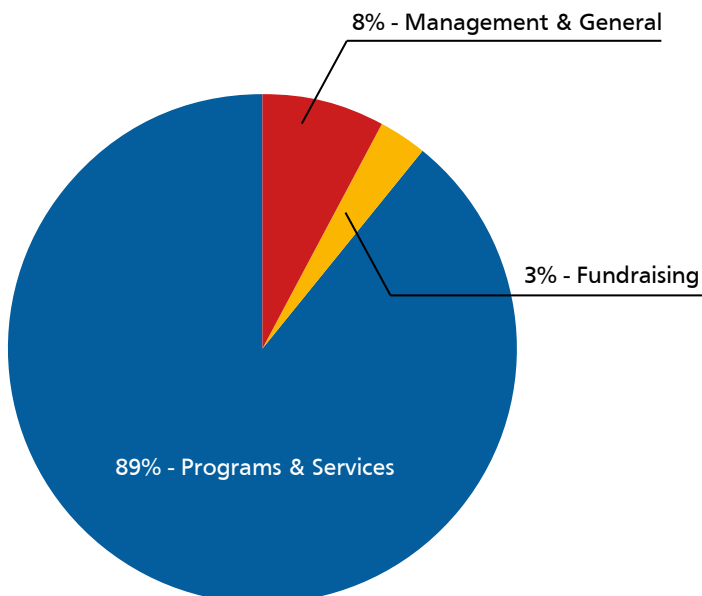
Bill O'Reilly, Executive Director
Jennifer Smith, Assistant Director
Mackenzie Pfeiffer, Senior Services Coordinator
Marylee Fuchs, Bookkeeper
Meredith Nelson, Membership & Communications
Jon Van Hoek, Senior Nutrition Program Coordinator (Dec.)
Emily Kennedy, Senior Services Coordinator (Jan.-Nov.)
Mary Erskine, Senior Nutrition Program Coordinator (Jan.-Nov.)

2020 Board of Directors

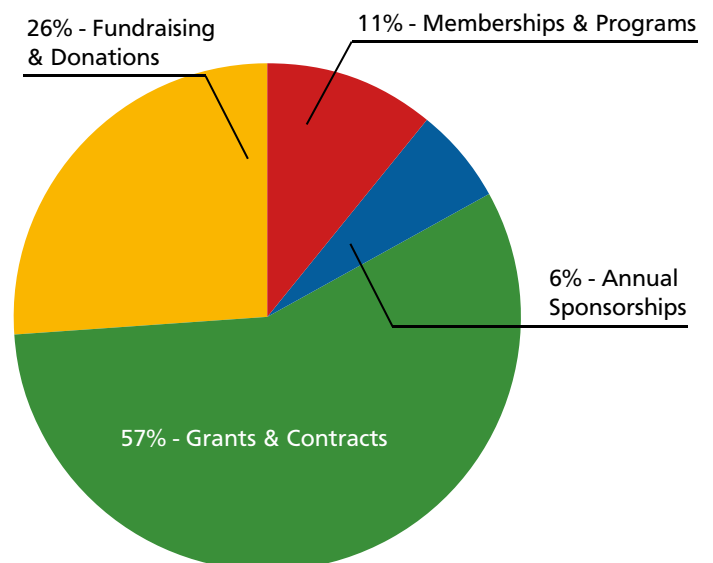
President: Gary Munce
Vice President: Charlotte Wyche (President, Nov.-Dec.)
Treasurer: Ken Gietzen
Secretary: Charlotte Bentley
Phil Boham
John Daniels
Julie Deppner
Ken Gietzen
Nancy Graebner
Diane Kieliszewski
John Knox
Gary Maynard
Dave Schaible
Mary Tomac
Jerry Wilczynski (Vice President, Nov.-Dec.)

2020 Budget

Expenses



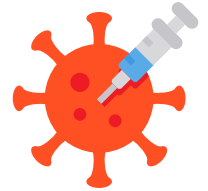
Income



Looking Forward

2020 was a year of significant challenges and hardships worldwide. Thanks to the ceaseless support of the Chelsea Community and the solid foundation put in place by many individuals over many years, the Chelsea Senior Center came through 2020 stronger and more committed than ever. And so, we look to the future with a very strong sense of hope and a collective realization that we need to build on our many programs and services to do even more! Already in 2021, we can report just a few of the things we are doing to move all of us forward together...

Vaccinations – Working with St. Joe's Chelsea, we were able to schedule vaccinations for over 200 local seniors and when needed, we provided transportation. As part of this, we telephoned nearly all of our over 1,000 members.



We Reopened!

In April we were finally at a level of protection where we could again provide a safe environment for our members. The members have been rolling in and though the big smiles are behind face masks, we can see the smiling eyes everywhere!

The Ann Van

The latest transportation option made possible by the Vital Seniors program, The Ann Van, named for long-time volunteer Ann Feeney in honor of our all of our amazing volunteers, gives our members additional transportation options.



Physical Improvements

Before reopening we invested in making your senior center even better: new equipment in the activity rooms; a new hoop house cover and other improvements in the Intergenerational Garden; improved signage; sprucing-up our main hall and re-arranging the office; and new carpeting & paint in the office.